

Nemacolin: The Grand Lodge Penthouse Suite

In 1987, Joseph A. Hardy III, founder of the 84 Lumber Company, set out to buy a few acres near a lake or stream for his daughter, Maggie Hardy, who loved fishing, but instead he fell in love with Nemacolin and purchased a large portion of land. What began as a thoughtful gift for his daughter turned into a lifetime project they would share, building something truly magical together. Mr. Hardy has since moved into his next life, yet his accomplishments and spirit are celebrated across the resort.

Since 2002, Maggie, now joined by her son, PJ Magerko Liquorice, has continued to lead the way and expand the vision of Nemacolin (nemacolin.com), offering guests and members a truly extraordinary resort experience. With a proud humility and excitement for what's to come, the Hardy family looks ahead to the next chapter of Nemacolin magic.



Living room sitting area

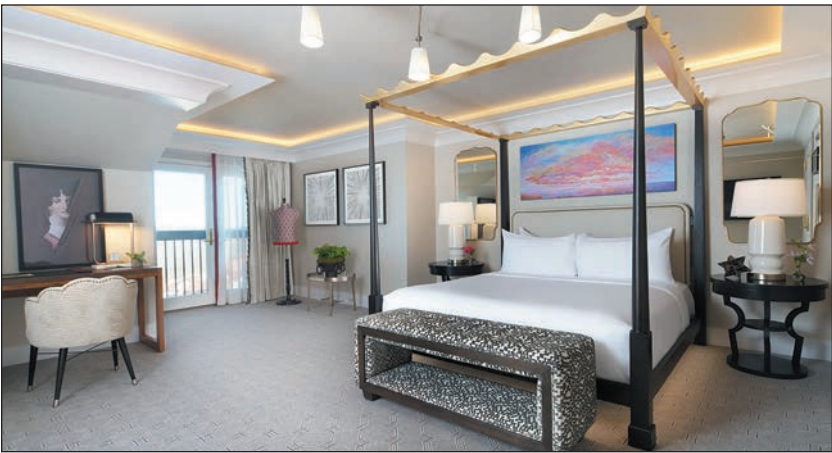


Foyer



Living room

The Penthouse Suite is The Grand Lodge's most over-the-top suite, featuring a primary bedroom with a king bed, a second bedroom with two queen beds, two bathrooms, and a private Juliet balcony. Whether you're traveling with a large party or you simply demand the most spacious, most luxurious, and most unforgettable stay in the land, there's no substitute for Nemacolin's Penthouse Suite at The Grand Lodge. ●



Primary bedroom



Second bedroom