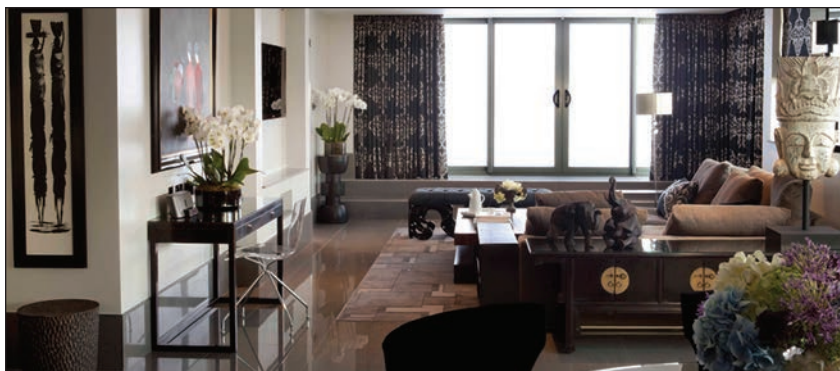


The May Fair London



AS A FIVE-STAR LUXURY HOTEL, THE MAY FAIR LONDON BRINGS together boutique attention to detail with grand hotel service. A London icon first opened by King George V in 1927 and now transformed for the 21st century, the property (www.themayfairhotel.co.uk) offers over 400 generously spacious bedrooms, including 12 of the capital's most memorable hotel suites, a discreet spa, a fine-dining restaurant, and the quintessential London Casino. The spirit of surrounding Mayfair is captured in the property's destination May Fair Bar, glamorous Crystal Room, and elegant Danziger Suite, which among them have played host to some of London's most extravagant society events.

Guests will revel in the choice of three top-of-the-line suites at which to experience the best the property has to offer.

The Ebony Suite is the latest addition to the May Fair's signature suite collection and boasts a spacious private terrace poised above the streets of Mayfair as well as futuristic TOTO technology. Featuring a spacious lounge area complete with glass dining table, 52-inch flat-screen TV, sleek kitchenette, and separate guest bathroom, the suite also offers access to an adjoining King Standard Bedroom. The luxury living area spills out onto the terrace complete with patio furniture and panoramic views. When booked as a two-bedroom suite, guests can also make use of the suite's separate entrance, which doubles as a private lobby.

Named after the famous designer, the 1,492-square-foot one-bedroom Schiaparelli Suite is a tribute to retro glamour, designed and furnished in a witty style. Guests will enjoy a lounge with integrated fireplace and a

curtain and lighting system; a dining area with full-size eight-seat dining table; a bedroom with king-size double bed; and a bathroom with limestone egg bath, LCD TV, and illuminated rain shower. The suite itself offers a 42-inch Bang & Olufsen plasma TV and Bang & Olufsen CD player in the lounge and bedroom and CCTV entry controls, allowing a guest to host corporate functions and presentations. Special services include 24-hour butler service, airport pickup and transfer, and fine pressing.

Elegantly positioned on the 9th floor of the hotel, The Penthouse Suite offers over 2,100 square feet of space and includes a decked terrace with panoramic views of London; a master bedroom with double dressing room and king-size double bed; a bathroom with a marble bath, LCD TV, and illuminated rain shower; a second bedroom with a circular revolving bed and en-suite bathroom; 42-inch Bang & Olufsen plasma TVs in both bedrooms; a lounge with an integrated fireplace and a curtain and lighting system; 65-inch Bang & Olufsen plasma TV and Bang & Olufsen CD player with MP3 connectivity; a dining area with full-size 10-seat dining table; a kitchen for entertaining; and CCTV entry controls. An array of indulgent services for guests include 24-hour butler service including pre-arrival arrangements, shoe-polishing, packing and pressing services, and in-room dining; six bottles of house wine; and fresh flowers. ●

Ebony Suite living area and balcony (top row); Schiaparelli Suite living area and bedroom (center row); Penthouse Suite living area and balcony, and bathroom (bottom row)

